

Guide for BRIDGE Services users with current MDR-500 models

Brigade updated the BRIDGE Server to the new version of Server software on 25th January. In order to maintain connectivity the MDR Dashboard must be updated to the latest version (2.3.1.0.55). Please read the notes below confirming actions on how to upgrade the Dashboard. To benefit from the latest bug fixes and to provide full functionality we recommend also installing the new Firmware. **The Dashboard version number can be found on the bottom of the Dashboard log-in page.**

The new model MDR-500 Series (Gen2) products require the new version (2.3.1.0.55) of the Dashboard to allow local downloads from the hard drive.

To facilitate local downloads and to maintain connectivity please –

- Download the new Dashboard (2.3.1.0.55) software from the Brigade Product Support Area and install on any device where the previous version of the Dashboard was installed.

Please Note

- Hard Drives and SD cards from **new** model MDR-500 Series (Gen2) use a new filing system called FS5.0 and are NOT interchangeable with **current** MDR-500 Series models unless a firmware update has been carried out
- New Hard Drive caddies are marked with a **Gen2** logo on the front plate to indicate that they are formatted with the new FS5.0 file system
- Hard Drives and SD cards from **current** model MDR-500 Series are NOT interchangeable with **new** models (Gen2) unless the Hard Drive and SD Card have been re-formatted to the new FS5.0 file system

If Hard Drives (or SD cards) need to be swapped between vehicles, then the firmware on all MDR-500 Series units should be the latest version and the Hard Drives (and SD cards) must all be re-formatted to the new file system. Instructions for updating the firmware and formatting the HDD and SD card are included in the manuals for the MDR-500 Series and are reproduced here for convenience.

Please ensure you download and backup any essential data from HDDs prior to formatting as this data will be lost.

How to update the Dashboard Software

Download the latest version of the Dashboard from the Brigade Product Support Area

Reference section 9.3, page 41 for instructions on installing the latest version of the Dashboard

- This operation is performed on the client PC. Right-click the installation file shown in MDR-Dashboard5.0 icon Figure 131 and click run as administrator.

There may be a security warning pop up which may be ignored. The software is verified to be virus free. Click RUN.

The setup wizard window will then be displayed. Click NEXT to begin the installation.

Users can choose preferred language display, which is listed in MDR-Dashboard 5.0 Setup Figure 134 installation windows will switch to the chosen language after clicking OK.

Note: this only applies for installation windows, not the MDR-Dashboard 5.0 client interface. The MDR-Dashboard 5.0 client language will follow the current computer's language.

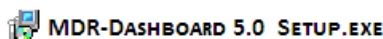
Users can configure the destination location (if there is not enough free disk space) which is shown in MDR-Dashboard 5.0 Location Figure 135. It is NOT recommended to change the default location.

Users can then choose if a start menu folder should be created as shown in Start Menu MDR-Dashboard 5.0 Figure 136.

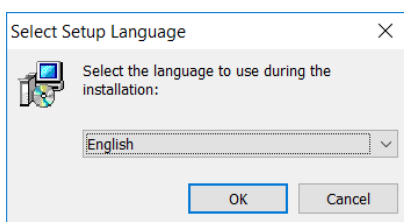
Referring to Desktop Icon MDR-Dashboard 5.0 Figure 137, users can choose if a desktop icon is created.

Users are now prompted to click NEXT to begin the installation. This is indicated in MDR-Dashboard 5.0 Installation Figure 138.

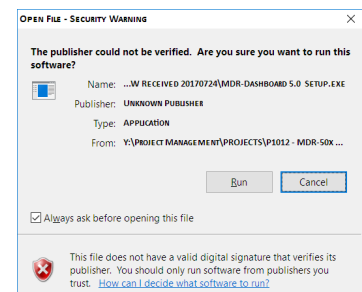
In MDR-Dashboard 5.0 Launch Step Figure 139 depicts the final, users may choose to launch the software. Tick the box and click FINISH.



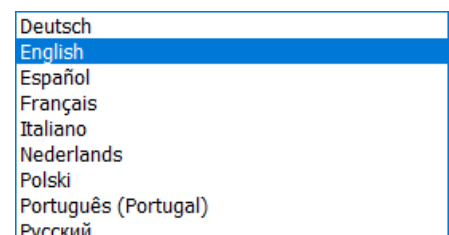
MDR-Dashboard 5.0 icon Figure 131



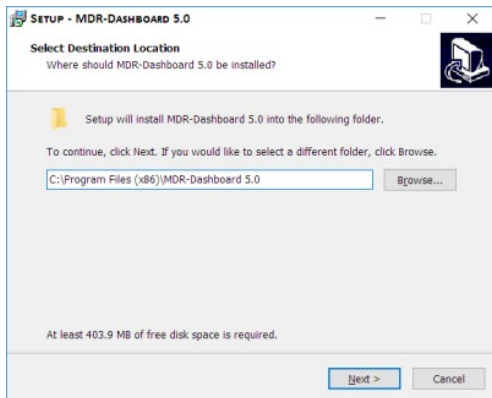
MDR-Dashboard 5.0 Setup Figure 133



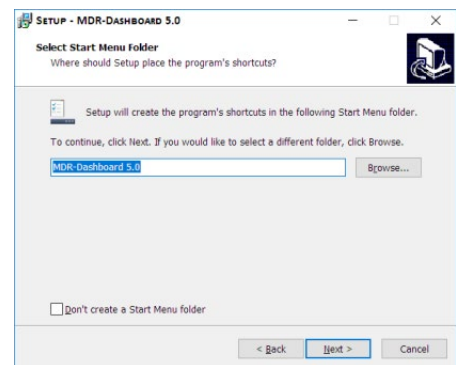
MDR-Dashboard 5.0 Setup Figure 132



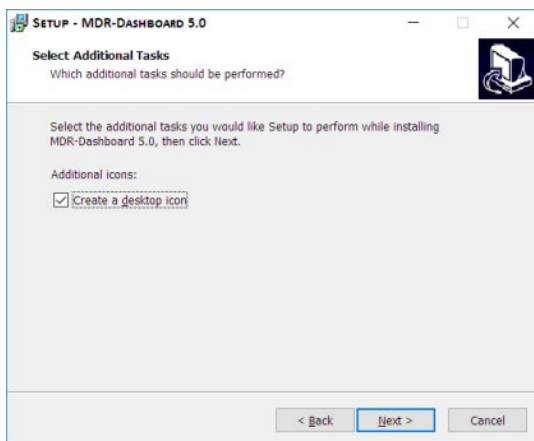
MDR-Dashboard 5.0 Setup Figure 134



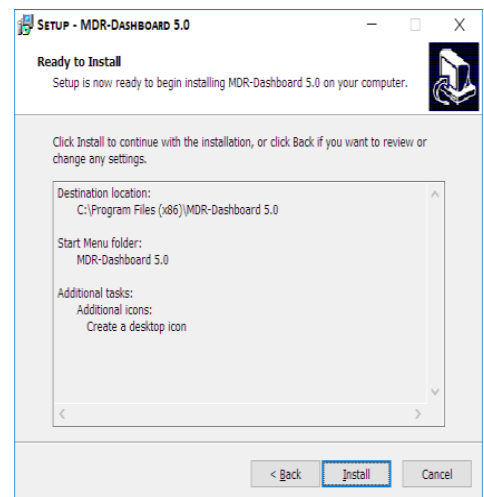
MDR-Dashboard 5.0 Setup Figure 135



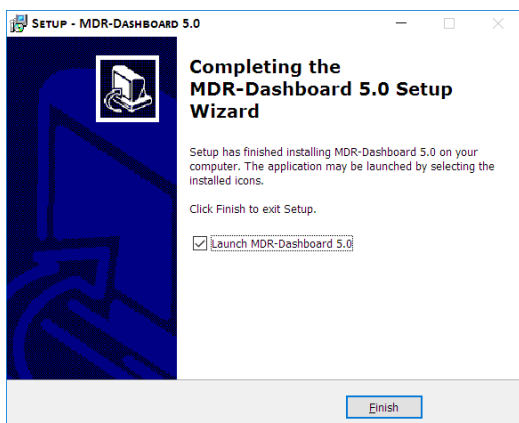
MDR-Dashboard 5.0 Setup Figure 136



MDR-Dashboard 5.0 Setup Figure 137



MDR-Dashboard 5.0 Setup Figure 138



MDR-Dashboard 5.0 Setup Figure 139

How to complete a Firmware Update

A bus-powered USB hub (minimum of 2 USB ports for USB mouse and USB flash drive) will be required for upgrade procedures.

FMW/MCU Upgrade is used to upgrade firmware and MCU (Microcontroller) version. Firmware contains MCU version (combined package) for an easier upgrade. Although, you can also do individual firmware and MCU version upgrades if there have been newer versions released with new features. Please check Brigade's website regularly for updates. Upgrades require a USB bus-powered hub. Firmware upgrades take approximately 5 minutes to upload.

Firmware is OSD (on-screen display) related software and directly affects the user interface.

MCU version is software related to MDR hardware functions.

Create a folder named **upgrade** in the root directory of your USB flash drive. Copy either the MCU version or firmware files (or the combined package). Plug the USB flash drive into USB bus-powered hub which is then connected to the front of the MDR. Click upgrade to start the upgrade process, see *Upgrading Progress Figure 110*. After the upgrade, the MDR will restart and display *System Upgrade Figure 111*. Check if the firmware/MCU version has been upgraded successfully by checking system information.

Automatic upgrades can also be carried out. To complete this type of upgrade, create a folder named **autoupgrade** in the root directory of your USB flash drive. Plug the USB flash drive into USB bus-powered hub which is then connected to the front of the MDR. The process will only begin once the MDR boots up after ignition or after a manual restart. The MDR will look for the folder during the start-up period. If it does see a different firmware, then you will be shown *Autoupgrade Figure 112*. If the firmware version is the same version installed on the MDR then no upgrade will occur.

Warning: Do not connect an external HDD to the front USB port. Only USB Flash drives (which contain flash memory) is supported by this port. Brigade will not be held responsible for incorrect use of this port.

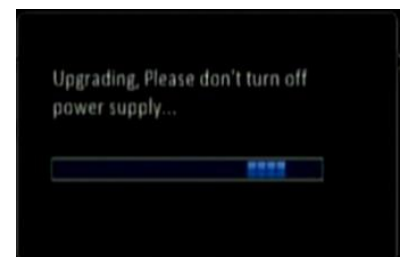
Warning: Ensure the flash drive is not unplugged from the MDR during this process. Power must be supplied to the MDR without any interruption. Both firmware and MCU upgrades are very sensitive operations

IPC Upgrade refers to IP Camera upgrades. Refer to IP Camera Operational Guide

Reference Section 7.5.3 on P35 of the MDR Manual to complete the Firmware upgrade



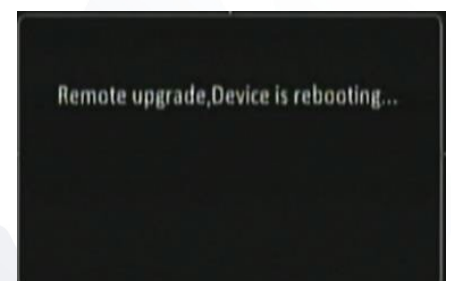
Upgrade Figure 109



Upgrading Progress Figure 110



System Upgrade Figure 111



System Upgrade Figure 112

How to format the Hard Drive and SD Card

Format is used to remove data from the different storage types. It is possible to format HDD, SD (Internal), SD (Fireproof Box) and Front USB. You will be asked to confirm if you would like to format prior to the MDR starting the format process. See below.

To format the fireproof box, click format then choose MDR. This will format the device into a proprietary format that the MDR can record to.

A USB flash drive that is plugged into the front USB of the MDR can also be formatted to MDR5 or FAT32 format. After formatting the HDD, the MDR will restart automatically.

Warning: Formatting the different storage types will delete all the data from that storage.

Note: SD (Fireproof Box) and Front USB will only be shown on the OSD if plugged in.

Reference Section 7.5.4 on P36 of the MDR Manual to complete the Firmware upgrade.

